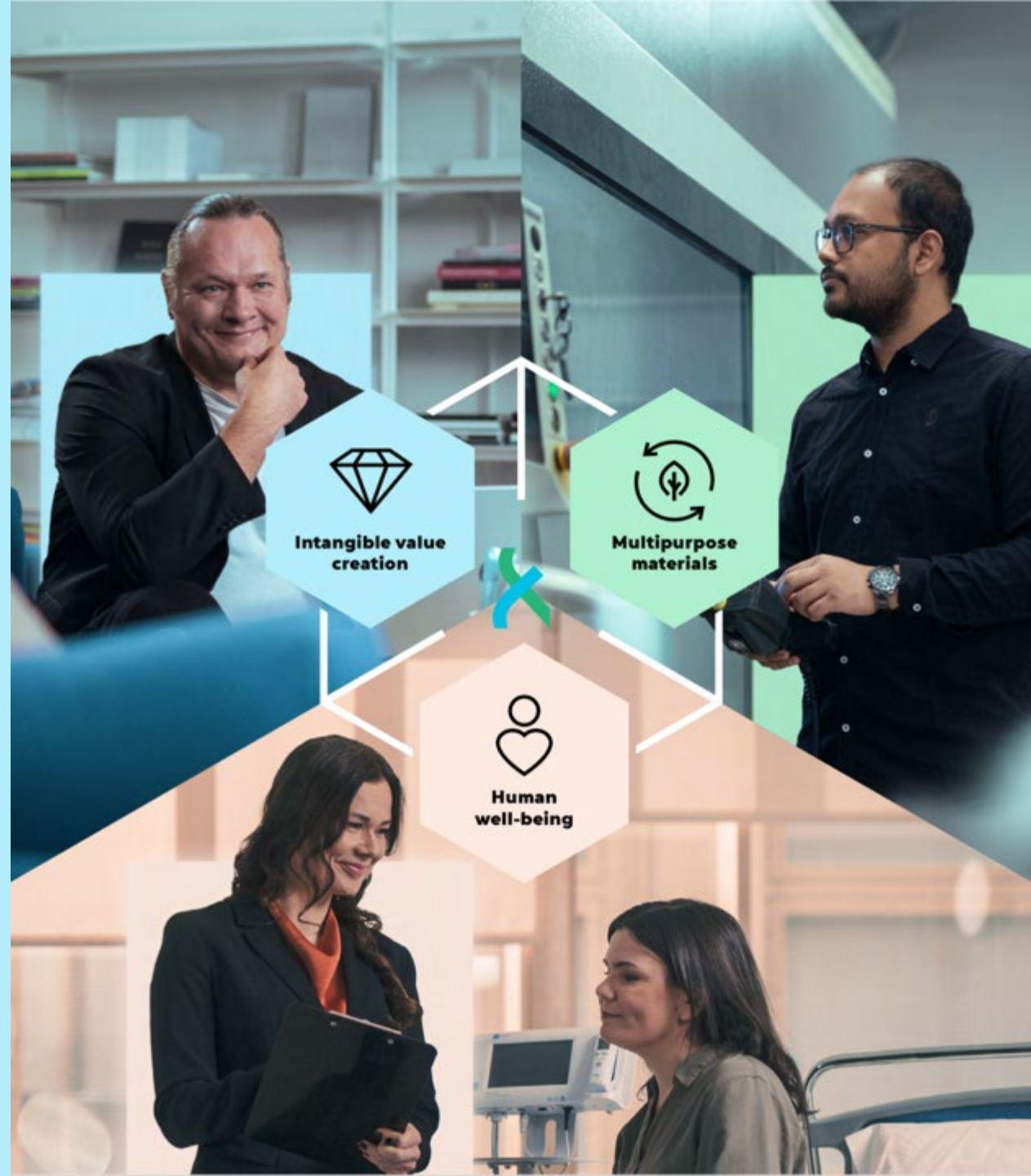




We Enable Responsible Growth

AHK Spring Forum 2026
13.5.2026
Dr. Antti Kapanen



2 organisations, 2 missions, 3 campuses

LUT UNIVERSITIES



Strongly specialised international research university

- » Internationally competitive research groups
- » Corporate collaboration bringing relevance to research
- » Strong international master's and doctoral programmes

Research strengths

- » Planetary resources
- » Business and society
- » Digital revolution
- » Energy transition

Stronger together

RDI

Combined expertise in research, development, and innovation

EDUCATION

Internationalization, continuous learning, and guidance in choosing an education path

COMMUNITY

Shared culture, shared university services, and a thriving community

GROWTH

Expansion beyond Finland and new business opportunities



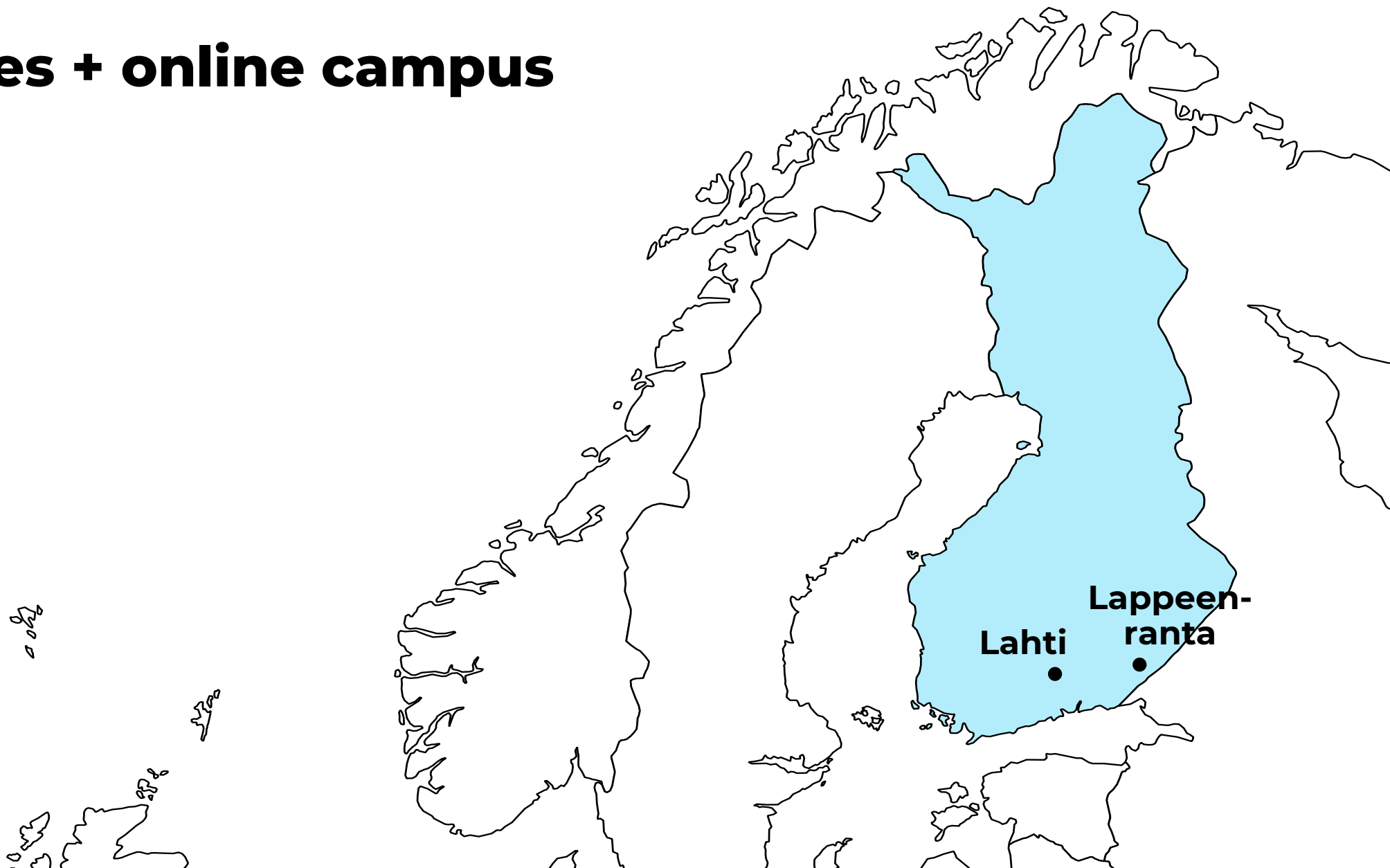
Higher education institute focusing on business, industries, and the world of work

- RDI activities for the world of work
- Bachelor's and master's degrees for the working world and continuous learning

Strengths of education and RDI activities

- Intangible value creation
- Multipurpose materials
- Human well-being

Two cities + online campus



LAB in figures

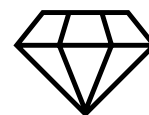
10,400
students

3
campuses:
Lappeenranta,
Lahti, online

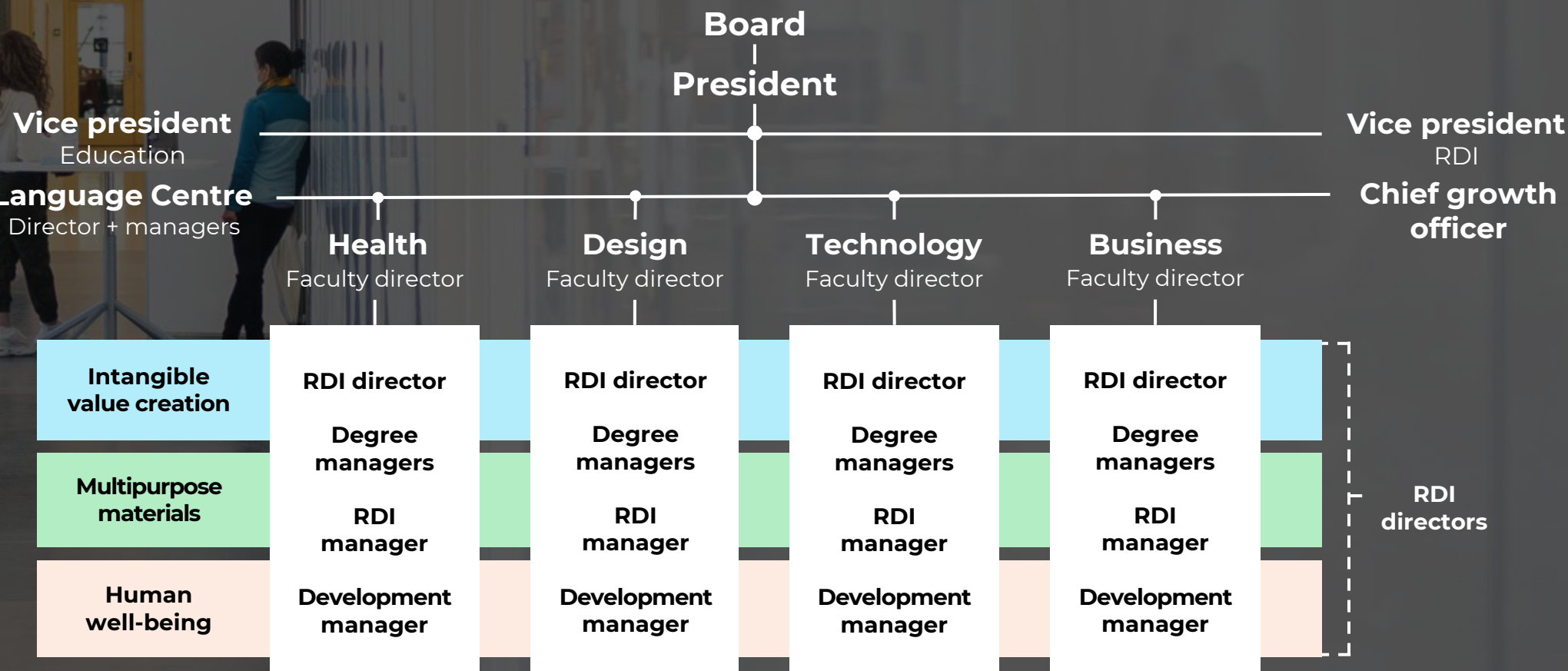
Turnover
79
million
euros

About
1,400
international
degree
students

600
teachers and
RDI experts



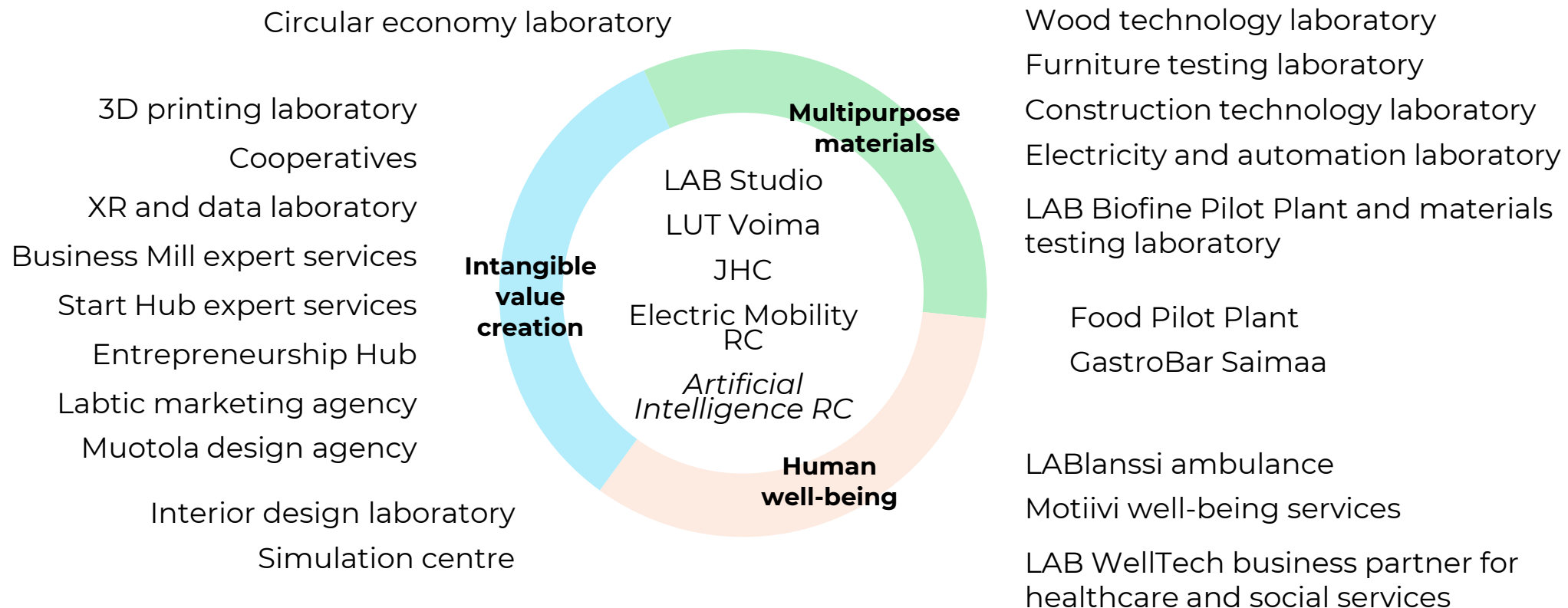
Organisation



LAB's strategy requires the LAB community to think outside the box.

Circular Economy is present across our core competences.

Innovation and learning environments create impactful expertise



We are a competent partner to work with


Contract RDI projects

Contract education and training

Hub for European project consortia

Startup platform support

Students for hire



Contact us and we will find you the right contact person.

Thank you!

Dr. Antti Kapanen
International Networks
antti.Kapanen@lab.fi
+358 50 597 6381

lab.fi | Social media: LABfinland

